

Stormwater Management

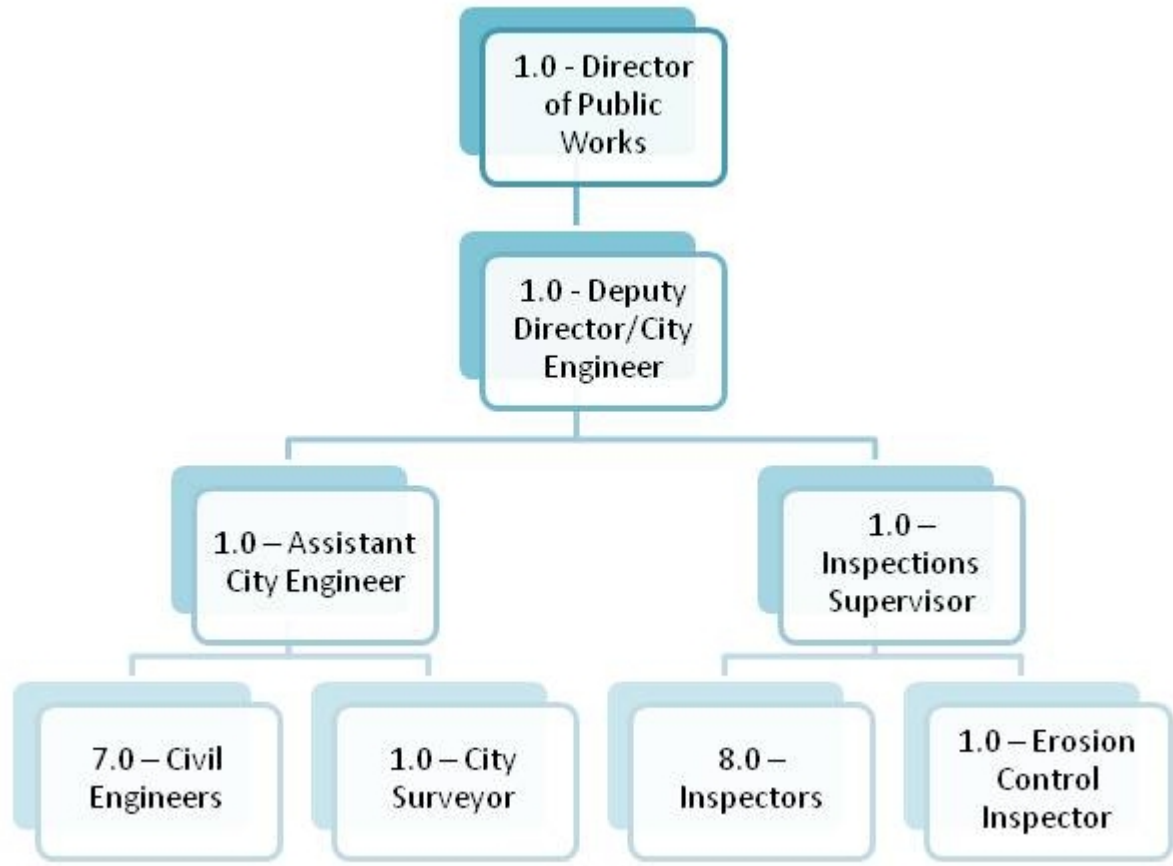
City of Appleton

John Peters and Sue Olson, P.E.

September 24, 2008

Table of Organization

- Department of Public Works
 - Engineering Division
 - Engineering, Technicians, Traffic, Inspections, Parking



In the beginning...

- Erosion Control Ordinance effective January 1, 1999
- Stormwater Management Ordinance effective January 1, 2004
- Authorized for Plumbing Plan review by Commerce since 1970's

STAFF QUALIFICATIONS

- Erosion Control Inspector
 - Soil Erosion Inspector Certification
- Professional Engineers
- Plumbing Inspectors
 - Master Plumbers
 - Commercial Plumbing Inspectors

Fire

Police

Health

Parks



Site Plan Review

Water

Engineering

Traffic

Building Inspections

Erosion & Sediment Control Review and Inspection Process For Non-UDC Sites

- **Most applications come from site plan submittal**
- **2000 sq ft soil disturbance or critical site**
- **Planned project – Inquiry by applicant/engineer**
- **Pre-submittal meeting – preferred**
- **Submit fee, application, and plan**
- **20 business days allotted for review**
- **If not approved, reasons in writing to applicant**

Erosion & Sediment Control Review and Inspection Process For Non-UDC Sites

- **Initial inspection at building permit issuance**
- **Goal of inspection at least once per month until site stabilization**
- **Problem or critical sites receive priority**
- **Stop work, citations if needed**
- **Close working relationship with staff attorney**

Erosion & Sediment Control Permit Fees

- **Based on size of disturbed area**
- **2000 sq ft to 1 acre - \$75 (\$100 in 2009)**
- **1 to 10 acres - \$100 (\$150 in 2009)**
- **10+ acres - \$150 (\$200 in 2009)**
- **Utility Company Construction - \$10**

UDC Erosion Control Review & Implementation

- **EC Inspector is part of Building Inspections**
- **Plan reviewed for site conformance to UDC by Building and/or EC Inspector**
- **Sites of 1 or more acres follow NOI process also**
- **EC Inspections concurrent with trade inspections**
- **E-mail notification sent to EC Inspector**
- **Other routine inspections typically done**

Stormwater Permit Process

- Submit separately from site plan and erosion control to Engineering
- Submittal meeting required
- Checklist for completeness, not accuracy
- Hire consultant on a yearly basis to conduct plan reviews

Stormwater Management Process

con't

- Allotted 30 business days per review
- 4 iterations typical
- 3 conditions of approval
 - Certification
 - As-built survey
 - Agreement electronically

Plumbing Plan Review

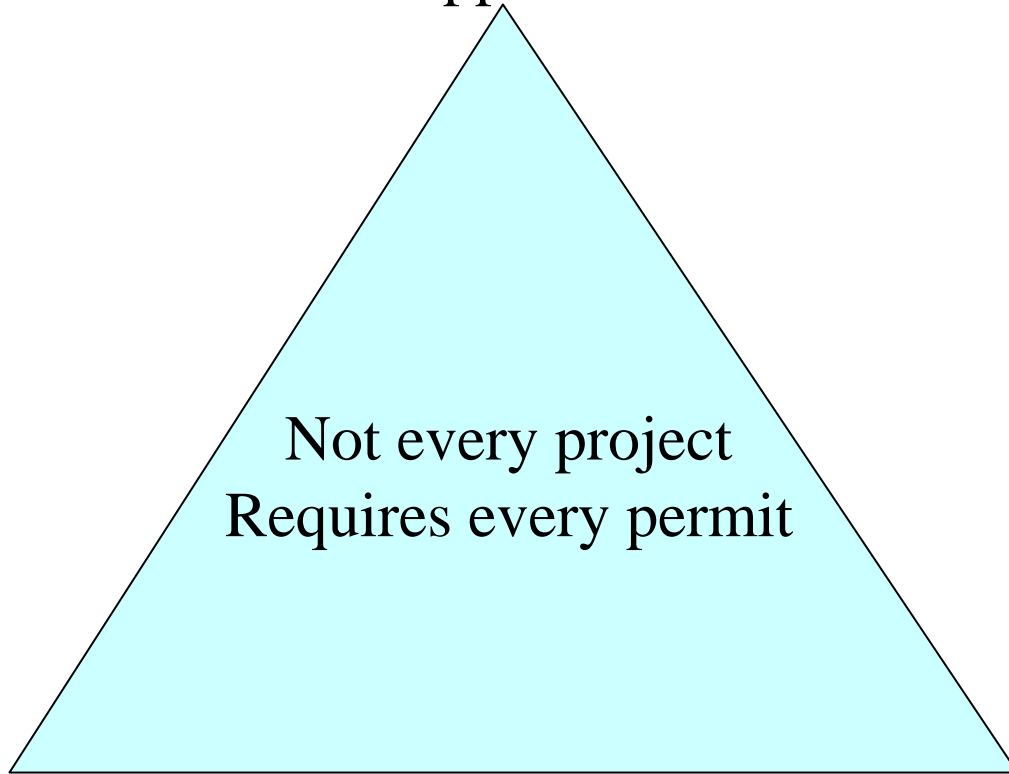
- Starts with site plan review
- Full plumbing plan details submitted separately for review
- Do not review for infiltration practices
- Other stormwater practices are reviewed by both the engineering consultant and the Plumbing Inspectors for different items

Site Plan
Approval

Not every project
Requires every permit

Stormwater Permit

Erosion Control Permit



Questions?