



Building Code Effectiveness Grading Schedule

ISO

- Leading supplier of
 - statistical
 - actuarial
 - underwriting information
 - Standardized coverage forms
 - Class & rating programs
- Licensed rating organization
- Advisory services



ISO Risk Decision Services

- Individual property
- Automobile and boats
- Sprinklered property
- Community services
 - Building Code enforcement
 - Fire Department services
 - Flood mitigation

ISO Risk Decision Services

- Individual property
 - 350,000+ surveys p/yr.
 - 2,500,000+ properties in database
 - 600+ Field Representatives
- Community hazard mitigation
 - 45,000+ published classifications
 - 140+ Field Representatives

Building Code Effectiveness Grading Schedule

- Conducting surveys since 1995
- Data mining capabilities
- Evaluation report for all jurisdictions



Development Group

- Institute for Business & Home Safety
- International Conference of Building Officials (ICBO)
- Building Officials and Code Administrators Int'l (BOCA)
- Southern Building Code Congress International (SBCCI)
- Insurers
- ISO

Information Gathered through BCEGS™ Survey



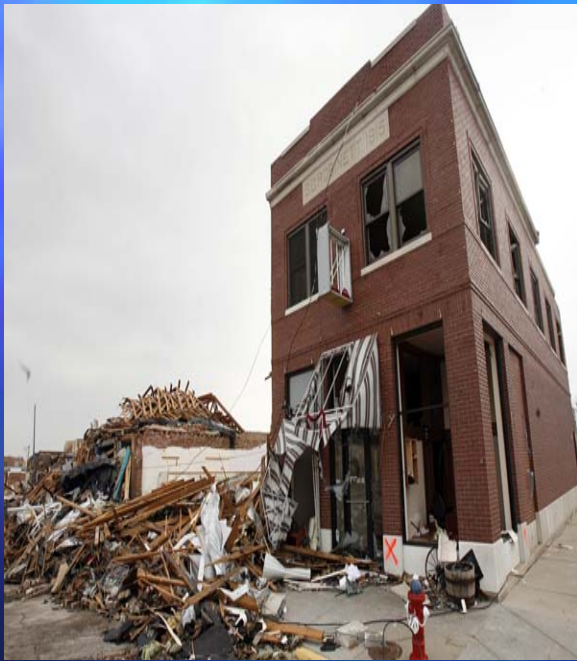
- Background Information
 - Community Statistics
- Administration of Codes
 - Adoption
 - Amendments
- Plan Review
 - Staffing
 - Completeness
- Inspection
 - Staffing
 - Procedures
- Employee Data

BCEGS™ Team

- 6 Field Managers
- 32 field Representatives
- 5 Processing Staff
- 4 Quality Control Staff
- 3 IT Staff
- 1 Administrative Staff
- 1 Product Manager



Benefits to Communities



- Improve building codes enforcement and the business of enforcement
- Promotes code compliance
- Reduction of property losses
- Assists in the reduction of economic and social disruption as a result of a catastrophic event



BCEGS™ Survey Preparation

Record keeping is the key it
becomes a way of life

It's all in the numbers

- Permits
- Plan reviews
- Inspections
- Responsibilities
- Training
- Certification
- Continuing education
- Budget information
- Public awareness
- Property value



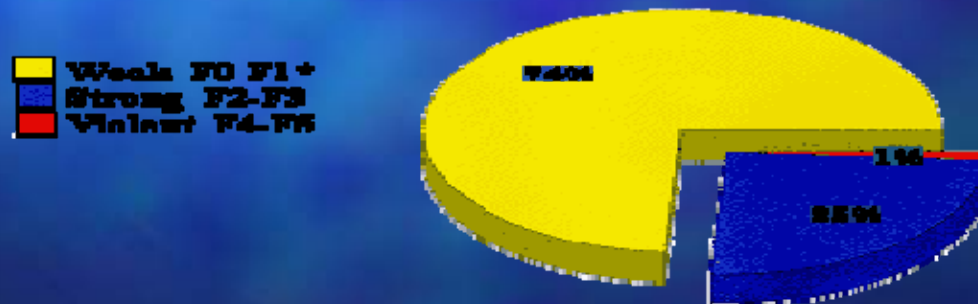
Residential or Commercial

- New building
- Addition
- Renovation
- Manufactured/ mod
- Other building
- Other non building
- Building
- Electrical
- Fuel gas
- Mechanical
- Plumbing

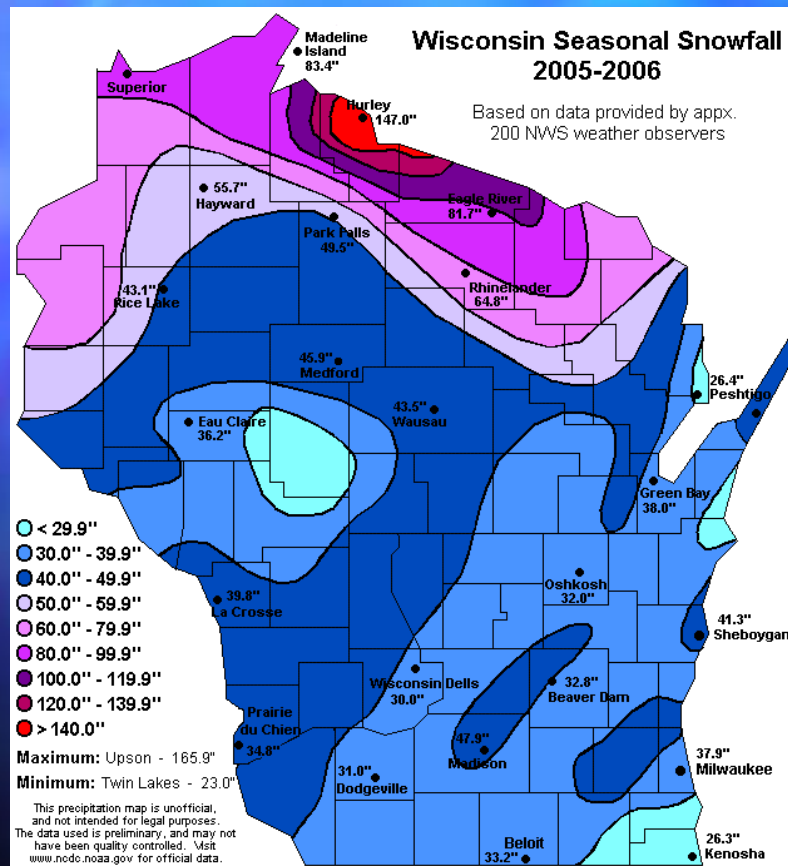
Permits

- Floodplain questions
- The basis for consistency checks
- Used to evaluate staffing numbers
- BCEGS™ is not the enforcement authority

**Percent of All Tornadoes 1950-1994
by Fujita Scale Class**



Plan reviews / Inspections



- Staffing levels
- Certifications
- Proto type
- Record keeping
- Benchmarks

Employee Data Sheet

- Hours worked
- Education
- Experience
- Responsibility
- Certification
- RDP
- Supervisory Duties

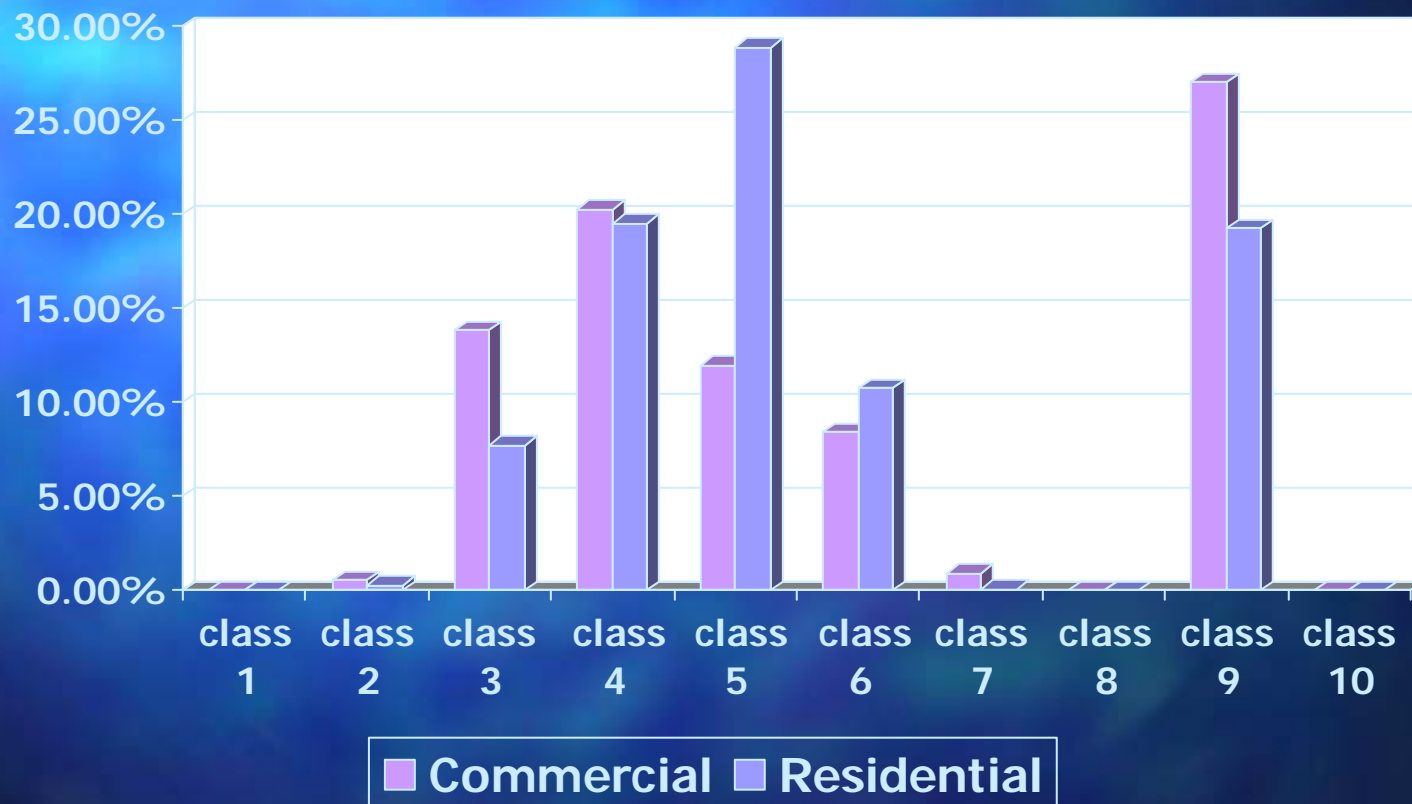


Budget / Financial information

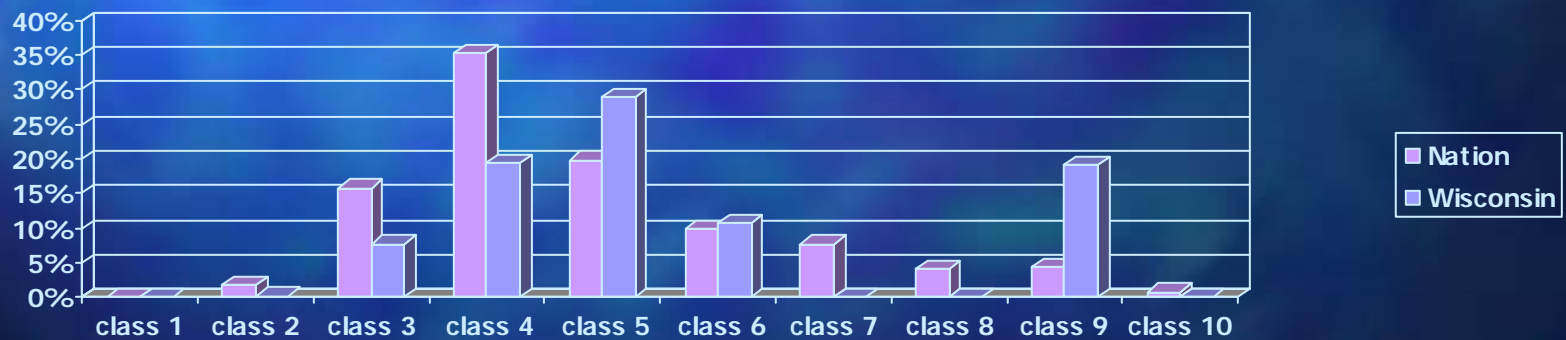
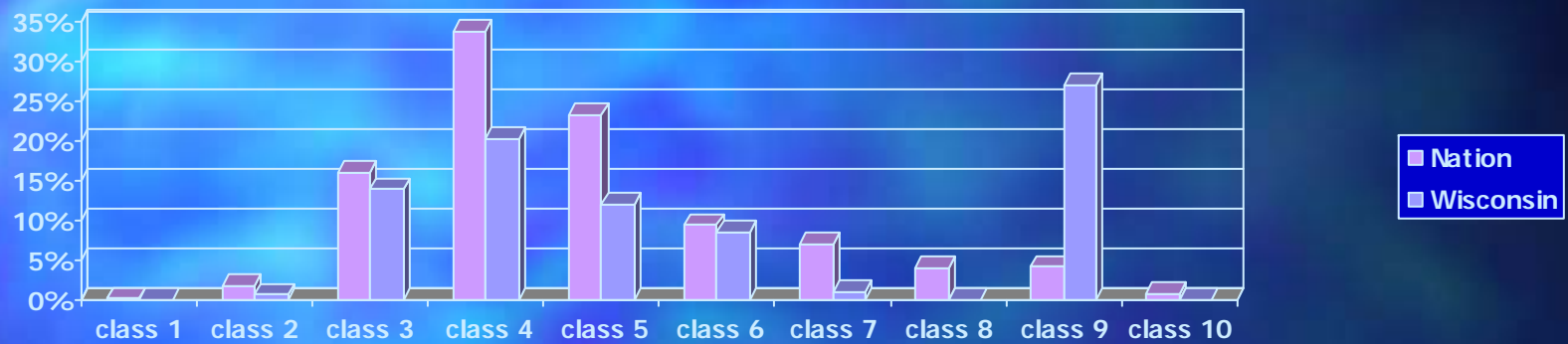


- Total operating
- Gross receipt
- Training expenses
- Public awareness
- Bonuses
- Construction value
- Tax value

BCEGS™ Breakdown Wisconsin

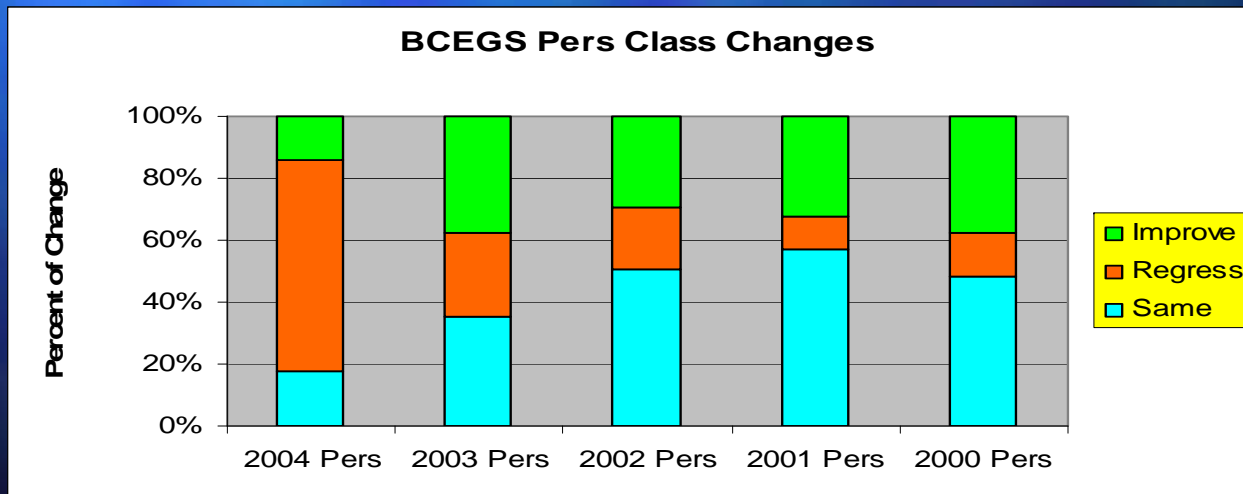


Commercial / Residential



Regressions

- Most common causes:
 - Adopted code out of date or amended
 - Staffing level not adequate to provide level of service
 - Procedural changes



Discussion

